

LUCE RAIL

www.divaluce.com

Collection



DIVA LUCE
light & form

ARCHITECTURAL LIGHTING +



explore a multitude
of components and
add-ons...



customizable
lighting, never
seen before



variations
limited only
by your imagination

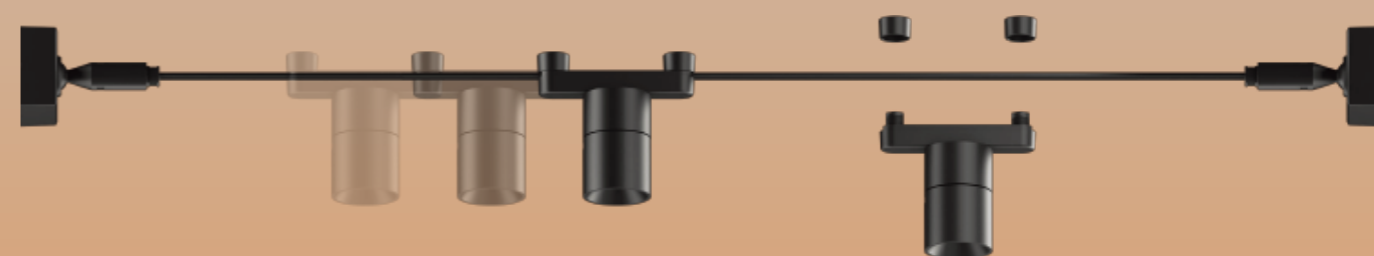
PRODUCT:
Loop Base Rail

PRODUCT:
Tension Base Rail

INTEGRATION:
LUCE Rail connecting to LUCE Bridge

PRODUCT:
Multi-track connector

PRODUCT:
Suspension Kit Rail



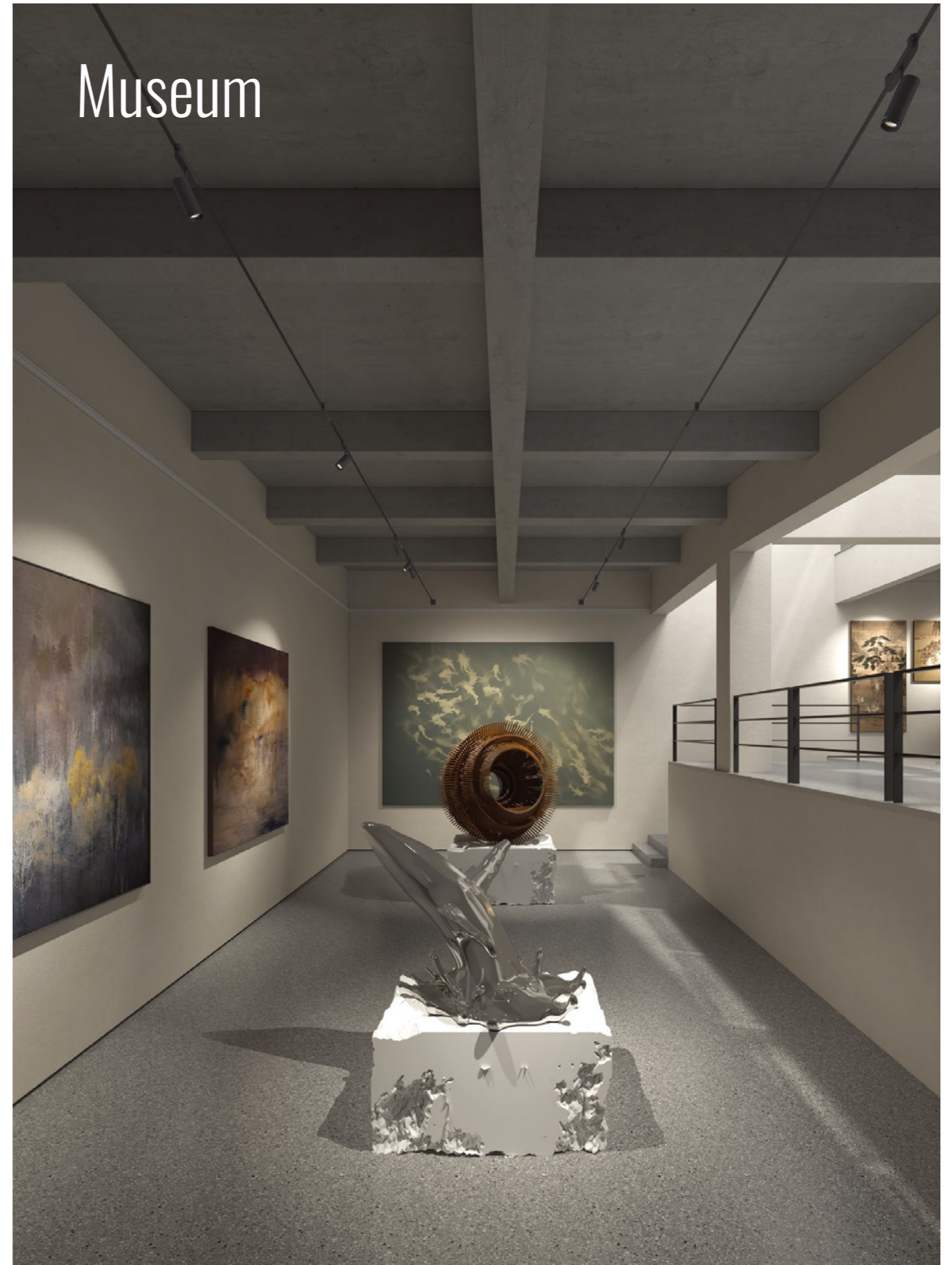
break free from
the traditional
constraints of design
with flexible lighting



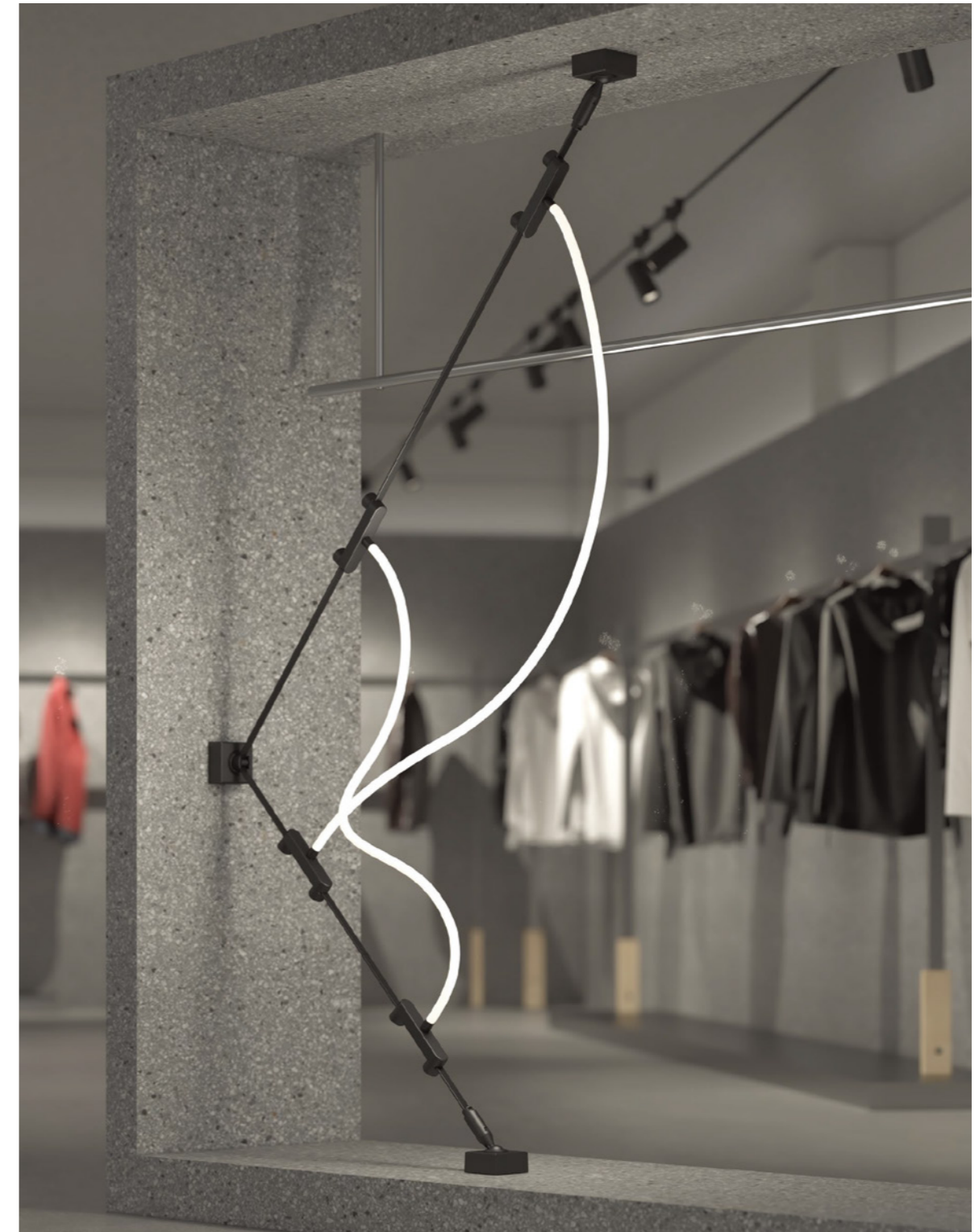
Office



Museum

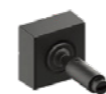


Retail Store





Product List



①
LR-SJQ

Tension Base Rail x2



②
LR-ZL

Loop Base Rail x2



③
LR-004

Suspension Kit Rail x3



④
LR-XTD-R48T-D-40W

LINEAR Blade Rail x4

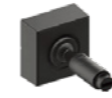


⑤
LR-G18-1000-100W

TUBE Rail x1

Example 1

Product List



1
LR-SJQ

Tension Base Rail x8



2
LR-ZL

Loop Base Rail x4









3
LR-DD2-7W

CONE Pendant 2 Rail x16

Example 2



Product List

	1 LR-SJQ	Tension Base Rail	x8
	2 LR-ZL	Loop Base Rail	x4
	3 LR-004	Suspension Kit Rail	x16
	4 LR-DD2-7W	CONE Pendant 2 Rail	x4
	5 LR-G18-1000-100W	TUBE Rail	x1
	6 LR-SD4-10W	CLUB Zoom Spot Rail	x1

Layout Example 3

LUCE RAIL

LUCE Rail is revolutionary technology, that isn't compatible with just any light. Below you will find all of the lighting currently available for the LUCE Rail range, from spot lights to pendant lights and many more options that will allow you to unleash your creativity, and fill your space with unlimited designs.

LINEAR BLADE RAIL



Model	LR-XTD-R24T-D-20W	20W	502*26*57mm
	LR-XTD-R48T-D-40W	40W	933*26*57mm
	LR-XTD-R84T-D-70W	70W	1580*26*57mm
	LR-XTD-R108T-D-90W	90W	2011.5*26*57mm
Angle	24°/36°		
CRI	Ra≥90		
CCT	3000K / 3500K / 4000K / 5000K		
Material	Aluminum		

LINEAR DIFFUSER RAIL



Model	LR-XTM-2J-D-20W	20W	502*26*57mm
	LR-XTM-2J-D40W	40W	933*26*57mm
	LR-XTM-2J-D-70W	70W	1580*26*57mm
	LR-XTM-2J-D-90W	90W	2011.5*26*57mm
Angle	100°		
CRI	Ra≥90		
CCT	3000K / 3500K / 4000K / 5000K		
Material	Aluminum		



LUNA SPOT RAIL

Model	LR-SP-011-12W	12W	D50*H130mm
	LR-SP-012-18W	18W	D65*H156mm
	LR-SP-013-24W	24W	D76*H182mm
Angle	15°/24°/36°		
CRI	Ra≥90		
CCT	3000K / 3500K / 4000K / 5000K		
Material	Aluminum		



MILA SPOT RAIL

Model	LR-SP-021-6W	6W	D45*H100mm
	LR-SP-022-12W	12W	D55*H115mm
	LR-SP-023-18W	18W	D65*H135mm
Angle	15°/24°/36°		
CRI	Ra≥90		
CCT	3000K / 3500K / 4000K / 5000K		
Material	Aluminum		



ZOOM SPOT RAIL

Model	LR-SP-032-10W	10W	D55*H115mm
	LR-SP-033-18W	18W	D65*H135mm
Angle	Adjustable 10° - 55°		
CRI	Ra≥90		
CCT	3000K / 3500K / 4000K / 5000K		
Material	Aluminum		



MILA BLADE RAI

Model	LR-BXQD-21-6W	6W	L112*W23*H87mm
	LR-BXQD-22-12W	12W	L220*W23*H87mm
Angle	24°/36°		
CRI	Ra>90		
CCT	3000K / 3500K / 4000K / 5000K		
Material	Aluminum		

MILA DIFFUSER RAI



Model	LR-BXQM-11-6W	6W	L118*W23*H87mm
	LR-BXQM-12-12W	12W	L231*W23*H87mm
Angle	100°		
CRI	Ra>90		
CCT	3000K / 3500K / 4000K / 5000K		
Material	Aluminum		

THEO SPOT RAIL



Model	LR-HM-Y075-10W	10W	D75*35mm
	LR-HM-Y105-18W	18W	D105*35mm
Angle	24°/50°		
CRI	Ra>90		
CCT	3000K / 3500K / 4000K / 5000K		
Material	Aluminum		

THEO BEAM SPOT RAIL



Model	LR-HM-F075-8W	8W	D75*H35mm
	LR-HM-F105-18W	18W	D105*H35mm
Angle	24°/38°		
CRI	Ra>90		
CCT	3000K / 3500K / 4000K / 5000K		
Material	Aluminum		

SNAP SPOT RAIL



Model	LR-DW02-R72-12W	12W	D72*H108mm
	LR-DW02-R92-18W	18W	D92*H130mm
Angle	15°/24°/36°		
CRI	Ra>90		
CCT	3000K / 3500K / 4000K / 5000K		
Material	Aluminum		

BOX SPOT RAIL



Model	LR-HM-F093-18W	18W	93*93*47mm
Angle	15°/24°/38°/60°		
CRI	Ra>90		
CCT	3000K / 3500K / 4000K / 5000K		
Material	Aluminum		



SNAP FIXED SPOT RAIL

Model	LR-DW01-R55-6W	6W	D55*H100mm
	LR-DW01-R75-12W	12W	D75*H130mm
	LR-DW01-R94-18W	18W	D94*H150mm
	LR-DW01-R115-24W	24W	D115*H160mm

Angle	15°/30°/45°
CRI	Ra≥90
CCT	3000K / 3500K / 4000K / 5000K
Material	Aluminum

NOVA FRAME RAIL



Model	LR-CG-048-12W	12W	D48*H185mm
-------	---------------	-----	------------

Angle	Adjustable 19.5° - 34°
CRI	Ra≥90
CCT	3000K / 3500K / 4000K / 5000K
Material	Aluminum

LUCE RAIL SUPPORT



Model	LR-TDT-1m-2X	/	167*33.5*42mm
	LR-TDT-1m-4X	/	D32.3*H65mm

Angle	/
CRI	/
CCT	/
Material	PC

ARIA SPOT RAIL



Model	LR-SP-PZ80-24W	24W	D80*H150mm
-------	----------------	-----	------------

Angle	24°/36°
CRI	Ra≥90
CCT	3000K / 3500K / 4000K / 5000K
Material	Aluminum

AURA BALL RAIL



Model	LR-YQ100Q-6W	6W	D100*H100mm
-------	--------------	----	-------------

Angle	100°
CRI	Ra≥90
CCT	3000K / 3500K / 4000K / 5000K
Material	Aluminum

AURA BALL SPOT RAI



Model	LR-YQ100S-12W	12W	D100*H100mm
-------	---------------	-----	-------------

Angle	24°
CRI	Ra≥90
CCT	3000K / 3500K / 4000K / 5000K
Material	Aluminum



TUBE RAIL

Model	Power	Dimensions
LR-G18-250A-21W	21W	Φ18mm*L2.5m
LR-G18-300-27W	27W	Φ18mm*L3m
LR-G18-400-37W	37W	Φ18mm*L4m
LR-G18-500-48W	48W	Φ18mm*L5m
LR-G18-1000-100W	100W	Φ18mm*L10m
LR-G22-250	23W	Φ32.5mm*L2500mm

Angle	360°
CRI	Ra>90
CCT	3000K / 3500K / 4000K / 5000K
Material	Aluminum+Silicone

TUBA PENDANT RAIL



Model	LR-CD-01-5W	5W	D40*H203mm
-------	-------------	----	------------

Angle	24°
CRI	Ra>90
CCT	3000K / 3500K / 4000K / 5000K
Material	Aluminum+Iron

SATELLITE Pendant Rail



G005 G009

Model	LR-BD-3W	3W	D60*H53mm
	G005 FOR LR-BD-3W	/	D12mm
	G009 FOR LR-BD-3W	/	D12mm

Angle	180°
CRI	Ra>90
CCT	3000K / 3500K / 4000K / 5000K
Material	Aluminum+Acrylic / Glass / Glass

CONE PENDANT RAIL



Model	LR-CD-02S-6W	6W	D84*H75mm
-------	--------------	----	-----------

Angle	24°/36°
CRI	Ra>90
CCT	3000K / 3500K / 4000K / 5000K
Material	Aluminum+Acrylic

ORBI PENDANT RAIL



Model	LR-CD-03-6W	6W	D85*H75mm
-------	-------------	----	-----------

Angle	24°/36°
CRI	Ra>90
CCT	3000K / 3500K / 4000K / 5000K
Material	Aluminum

PARC PENDANT RAIL



Model	LR-CD-04-6W	6W	D80*H120mm
-------	-------------	----	------------

Angle	45°
CRI	Ra>90
CCT	3000K / 3500K / 4000K / 5000K
Material	Aluminum